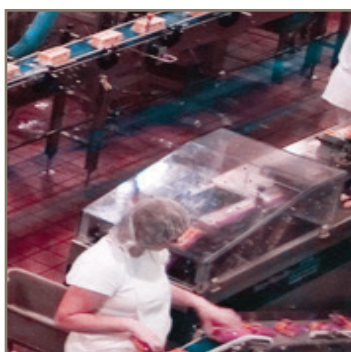


aerospace  
climate control  
electromechanical  
filtration  
fluid & gas handling  
hydraulics  
pneumatics  
process control  
sealing & shielding



## ColorTrax™

Striped Fluoropolymers



ENGINEERING YOUR SUCCESS.

# ColorTrax™

## Striped Fluoropolymers

### Customer Value Proposition:

Colortrax™, provides instant-positive identification of lines without obstructing the view of the media flowing through the tube. Unlike alternative marking systems, Colortrax™ bonds fluoropolymer to fluoropolymer to provide the greatest resistance to

rub-off, chemical attack and heat deterioration common in traditional marking systems. And because the stripe runs the entire length of the tube, operators can easily distinguish one line from another without having to search for identification labels. Additionally,

the pigmented fluoropolymer is confined to the tubing's outer wall, thus avoiding any risk of contaminating the process fluids inside.

TYPICAL SIZES - All product is made to order				
O.D.		O.D. X I.D. X Wall		Material
inch	mm	inch		
1/8	3.18	1/8 O.D. X 1/16 I.D. X .030 Wall		FEP, PFA, PTFE
3/16	4.76	3/16 O.D. X 1/8 I.D. X .030 Wall		FEP, PFA, PTFE
1/4	6.35	1/4 O.D. X 3/16 I.D. X .030 Wall		FEP, PFA, PTFE
1/4	6.35	1/4 O.D. X 1/8 I.D. X .062 Wall		FEP, PFA, PTFE
3/8	9.53	3/8 O.D. X 5/16 I.D. X .030 Wall		FEP, PFA, PTFE
3/8	9.53	3/8 O.D. X 1/4 I.D. X .062 Wall		FEP, PFA, PTFE
1/2	12.70	1/2 O.D. X 9/16 I.D. X .030 Wall		FEP, PFA, PTFE
1/2	12.70	1/2 O.D. X 3/8 I.D. X .062 Wall		FEP, PFA, PTFE
Sizes actually range from <1/8" up to 2"				FEP, PFA, PTFE
Available colors: Black, Blue, Brown, Green, Orange, Pink, Red, Violet, White, Yellow				

### Contact Information: Product Features:

Parker Hannifin Corporation  
**Parker-TEXLOC**  
4700 Lone Star Blvd.  
Fort Worth, TX 76106 USA

phone (817) 625-5081 or 800-423-6551  
fax (817) 624-9095 or 800-438-9562  
email [texlocquote@parker.com](mailto:texlocquote@parker.com)

- Fluid handling
- Laboratory tubing
- Electronics
- Analytical systems
- Drug equipment
- Biomedical

Colortrax™ is available in PTFE, FEP and PFA resins and in sizes up to 1" O.D. with up to ten striping colors. For more lines, two stripes can be placed side by side of the same or different colors.



ENGINEERING YOUR SUCCESS.